

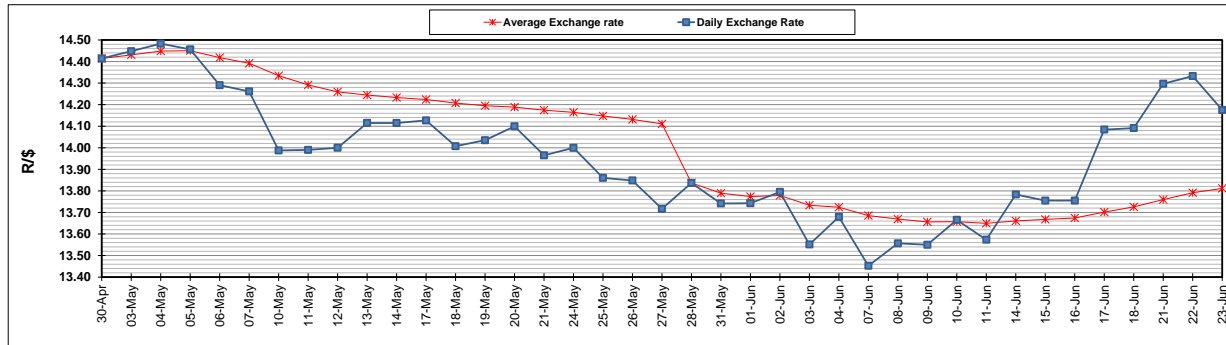
	PETROL 95 ULP	PETROL 93 ULP & LRP	DIESEL 0.05%	DIESEL 0.005%	ILL. PAR.
GAUTENG PUMP PRICE (SA c/l) AS FROM 02/06/2021	1,713.000	1,691.000	-	-	-
WHOLESALE PRICE (SA c/l) AS FROM 02/06/2021	-	-	1,466.620	1,471.020	877.488
SINGLE NATIONAL MAXIMUM RETAIL PRICE	-	-	-	-	1,102.000
BASIC FUEL PRICE - 23/06/2021 (SA c/l)	785.315	775.357	752.233	755.818	731.033
PRESS RELEASE CONTRIBUTION TO BFP 02/06/2021 - 23/06/2021 (SA c/l)	717.170	705.170	679.630	684.030	664.128
UNIT OVER/(UNDER) RECOVERY - 23/06/2021 (SA c/l)	(68.145)	(70.187)	(72.603)	(71.788)	(66.905)
AVERAGE BASIC FUEL PRICE 28/05/2021 - 23/06/2021	729.689	721.320	709.486	713.002	688.042
AVERAGE UNIT OVER/(UNDER) RECOVERY 28/05/2021 - 23/06/2021	(10.940)	(14.571)	(33.014)	(32.287)	(27.072)

ANALYSIS MOVEMENT OF AVERAGE OVER/(UNDER) RECOVERY

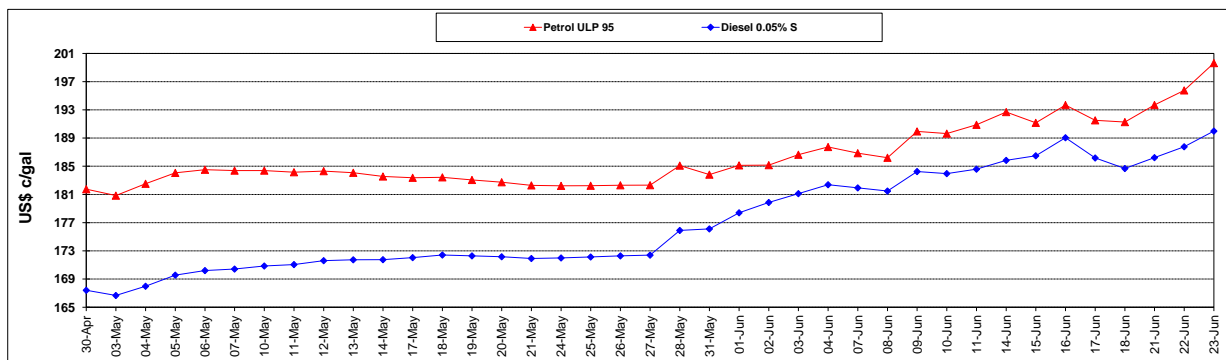
	PETROL 95	PETROL 93	DIESEL 0.05%	DIESEL 0.005%	ILL. PAR.
- MOVEMENT IN INTERNATIONAL PRODUCT PRICES	(26.763)	(30.213)	(48.399)	(47.749)	(41.992)
- MOVEMENT IN EXCHANGE RATE	15.823	15.642	15.385	15.461	14.920
AVERAGE UNIT OVER/(UNDER) RECOVERY 28/05/2021 - 23/06/2021	(10.940)	(14.571)	(33.014)	(32.287)	(27.072)

R/\$ EXCHANGE RATE - (R/\$14.1753- 23/06/2021)

EXCHANGE RATE USED IN BASIC FUEL PRICE



INTERNATIONAL PRODUCT PRICES OF BASKET USED IN BASIC FUEL PRICE



BASIC FUEL PRICE IN SA CENTS PER LITRE

